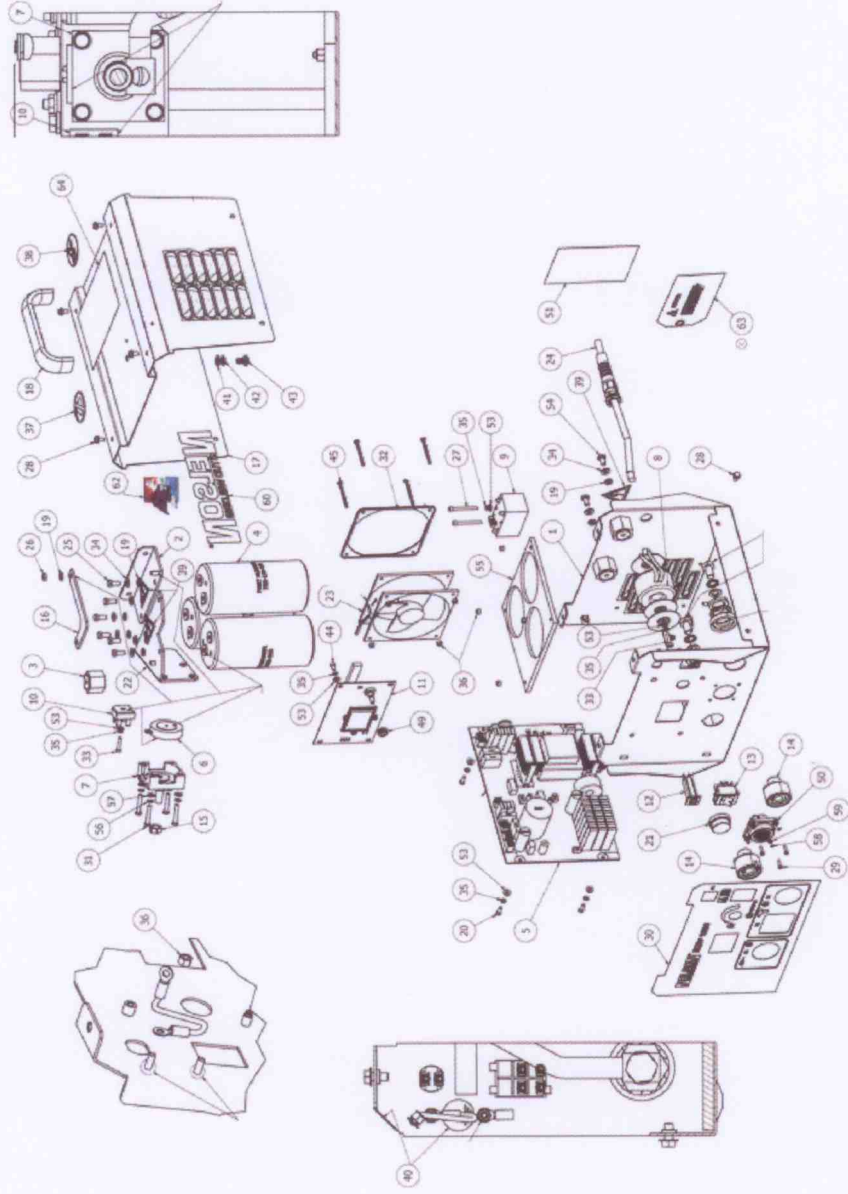


## 9 Exploded Views and Spare Parts Lists

### 9.1 Exploded view of NCD+ 1600



9.1.1 Spare parts list for NCD+ 1600

Item	Quantity	Art. no.	Designation
1	1	750-614-201	Enclosure bottom section
2	1	750-614-204	Busbar, negative current
3	3	727-029-215	Insulating support M6
4	3	702-119-000	Capacitor 27mF
5	0	750-614-041	Power unit card 115 V
5	1	750-614-050	Power unit card 230V
6	1	86-02-50	Thyristor
7	1	86-02-51	Clamping device for thyristor
8	1	723-247-014	Transformer 230 V
8	0	723-247-002	Transformer 115V
9	1	66-10-47	Mains filter
10	1	701-182-000	Bridge rectifier
11	1	750-614-020	Control card
12	1	709-274-020	Circuit-breaker, 10 A
13	1	709-274-010	Mains switch
14	2	85-10-02	Welding socket, DINSE
15	1	524-005-078	Hexagon nut, M10, stainless steel
16	1	750-614-205	Busbar, negative current, narrow
17	1	750-614-202	Enclosure, top section
18	1	729-114-102	Handle
19	9	524-005-300	Washer, flat, 18 mm, stainless steel
20	4	524-005-236	Hexagon socket screw M4x12, stainless steel
21	1	717-999-010	Dial
22	1	750-614-203	Busbar, positive current
23	0	750-614-206	Fan 115 V
23	1	750-614-207	Fan 230V
24	0	723-247-003	Mains power cable
24	1	723-247-015	Mains power cable CE 230V
25	6	524-005-326	Hexagon head screw M6x14, stainless steel
26	1	524-005-309	Hexagon head lock nut M6, nylon, stainless steel
27	2	524-005-317	Hexagon socket screw M4x40, stainless steel
28	8	524-005-315	Hexagon head screw M5x10 with flange, black
29	4	524-005-271	Pan head screw M3x12, cross-recess, stainless steel
30	1	724-576-002	Adhesive label for front plate of NCD+1600
31	4	524-005-312	Hexagon head screw M5X35, stainless steel
32	1	750-614-210	Seal for fan
33	2	524-005-332	Hexagon socket screw M4x20, stainless steel
34	8	524-005-311	Disc spring M6, stainless steel
35	8	524-005-303	Lock washer M4, stainless steel

**NCD+ 1600**

Art. Nr.: BE 1277

As of: July 28.2015



Item	Quantity	Art. no.	Designation
36	11	524-005-153	Hexagon head lock nut M4, nylon, stainless steel
37	1	87-09-35	Adhesive label (Prohibited for persons with cardiac pacemaker)
38	1	87-05-19	Adhesive label (Pull out mains power plug before opening)
39	5	724-485-015	Adhesive label, small (Dangerous electrical voltage)
40	2	724-485-010	Adhesive label (PE protective ground connection)
41	2	524-005-287	Flat washer M8, stainless steel
42	2	524-005-288	Lock washer M8, stainless steel
43	2	524-005-329	Pan head screw M8x12, cross-recess, stainless steel
44	1	524-005-325	Hexagon head screw M4x8, stainless steel
45	4	524-005-322	Pan head screw M4x45, cross-recess, stainless steel
49	1	714-033-000	Rubber grommet
50	1	723-247-017	Cable assembly for welding gun control plug to control card
51	1	724-576-012	Rating plate NCD+ 1600 CE
52	1	524-005-318	Hexagon head screw M4x30, stainless steel
53	9	524-005-120	Flat washer M4, stainless steel
54	2	524-005-313	Hexagon head screw M6x12, stainless steel
55	1	750-614-208	Base insulating board for capacitors
56	4	524-005-304	Lock washer M5, stainless steel
57	4	524-005-291	Flat washer M5, stainless steel
58	4	524-005-301	Lock washer M3, stainless steel
59	4	524-005-302	Flat washer M3, stainless steel
60	1	724-462-010	Adhesive label (Nelson logo)
62	1	724-576-016	Adhesive label (Adler logo)
NS	1	750-614-218	Parts set for NCD+ assembly, CE
NS	1	750-614-216	Adhesive label set for NCD+
NS	1	750-614-215	Cable set NCD+, CE
NS	1	723-247-010	Welding cable from DINSE Negative current welding socket to negative current busbar
NS	1	723-247-011	Green/yellow protective ground lead to enclosure bottom
NS	1	723-247-012	Connection cable for mains power switch to circuit-breaker
NS	1	723-247-013	Green/yellow protective ground lead to mains filter protective ground connection
NS	1	723-247-009	Welding cable from DINSE Positive current welding socket to thyristor
NS	1	723-247-008	Cable assembly from mains switch to mains filter
NS	1	723-247-007	Cable assembly for fan, bridge rectifier and power unit card
NS	1	723-247-004	Cable assembly for capacitors to power unit card
NS	1	723-247-001	Cable assembly for power unit card to control card
NS	1	723-247-021	Cable assembly for jumper plug
63	1	724-576-018	Hanging sign/Caution no GFCI/GEN
64	1	724-569-000	Adhesive label (general warning information)